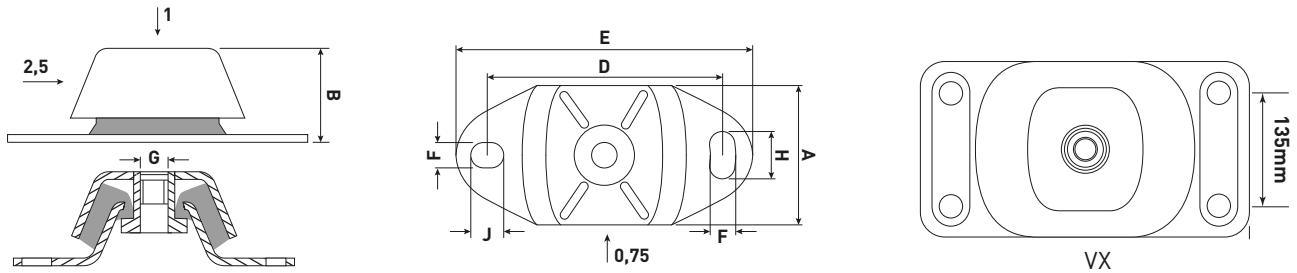


Product description

Marine mounts were originally developed for the installation of small marine engines and are designed to absorb screw pressure. The mounts therefore have different stiffnesses in the three load directions in order to optimise the reduction of the vibrations of small marine engines.

Application

Small marine engines, ship-mounted installations, generators, mobile systems and the like.



| Type | A [mm] | B [mm] | D [mm] | E [mm] | F [mm] | H [mm] | J [mm] | G |
|-----------|--------|--------|--------|--------|--------|--------|--------|-----|
| Marine VS | 60 | 38.5 | 100 | 120 | 11 | 14 | 11 | M12 |
| Marine VM | 75 | 50 | 140 | 183 | 13 | 30 | 20 | M16 |
| Marine VB | 114 | 74 | 182 | 228 | 18 | 35 | 25 | M20 |
| Marine VX | 190 | 112 | 270 | 330 | 18 | 18 | 18 | M24 |

| Type | Hardness 35 Sh(A) | | Hardness 40 Sh(A) | | Hardness 45 Sh(A) | | Hardness 55 Sh(A) | | Hardness 65 Sh(A) | | Hardness 75 Sh(A) | |
|-----------|-------------------|-----------------|-------------------|-----------------|-------------------|-----------------|-------------------|-----------------|-------------------|-----------------|-------------------|-----------------|
| | Max. load [kg] | Deflection [mm] | Max. load [kg] | Deflection [mm] | Max. load [kg] | Deflection [mm] | Max. load [kg] | Deflection [mm] | Max. load [kg] | Deflection [mm] | Max. load [kg] | Deflection [mm] |
| Marine VS | | | 40 | 4 | 50 | 4 | 75 | 4 | 90 | 4 | | |
| Marine VM | 110 | 5 | | | 150 | 5 | 225 | 5 | 300 | 5 | 425 | 5 |
| Marine VB | | | - | - | 425 | 6 | 625 | 6 | 800 | 5 | 1000 | 5 |
| Marine VX | | | | | 1000 | 8 | 1300 | 8 | 2250 | 8 | 3000 | 8 |

